

# Sliding Door Systems



## Overview

Arctic offers custom-made walk-in sliding door solutions to accommodate most applications. Whether multiple doors or just a single one, Arctic can engineer the right solution at a competitive price.

Choosing a sliding walk-in door is mostly determined by the location of the door opening, intended usage of that door, and in some cases space restrictions. Loading docks, pallet access and forklift traffic will benefit from the use of a sliding door.

Arctic foamed-in-place sliding doors are built using only the highest-grade components. Available in a variety of optional metal finishes, our foamed-in place doors are built to provide a structurally sound door assembly that is guaranteed to offer many years of trouble-free operation.

## Features

- Competitively priced compared to other providers
- Seamless Arctic Walk-in component integration - indigenous manufacturing
- Ensured engineering, manufacturing and delivery times in line with Arctic Walk-in
- Manual sliding doors are constructed using **KASON** 8100 Series hardware
- Frames and sliding doors have integral backing to provide rigidity and solid connection points
- Sliding doors are pre-assembled at the factory and then removed for shipment and easy assembly in the field
- Suitable for interior and exterior applications
- Custom door sizes available up to 120"
- Electric sliding doors are available

## Arctic Advantage



### Standard Features

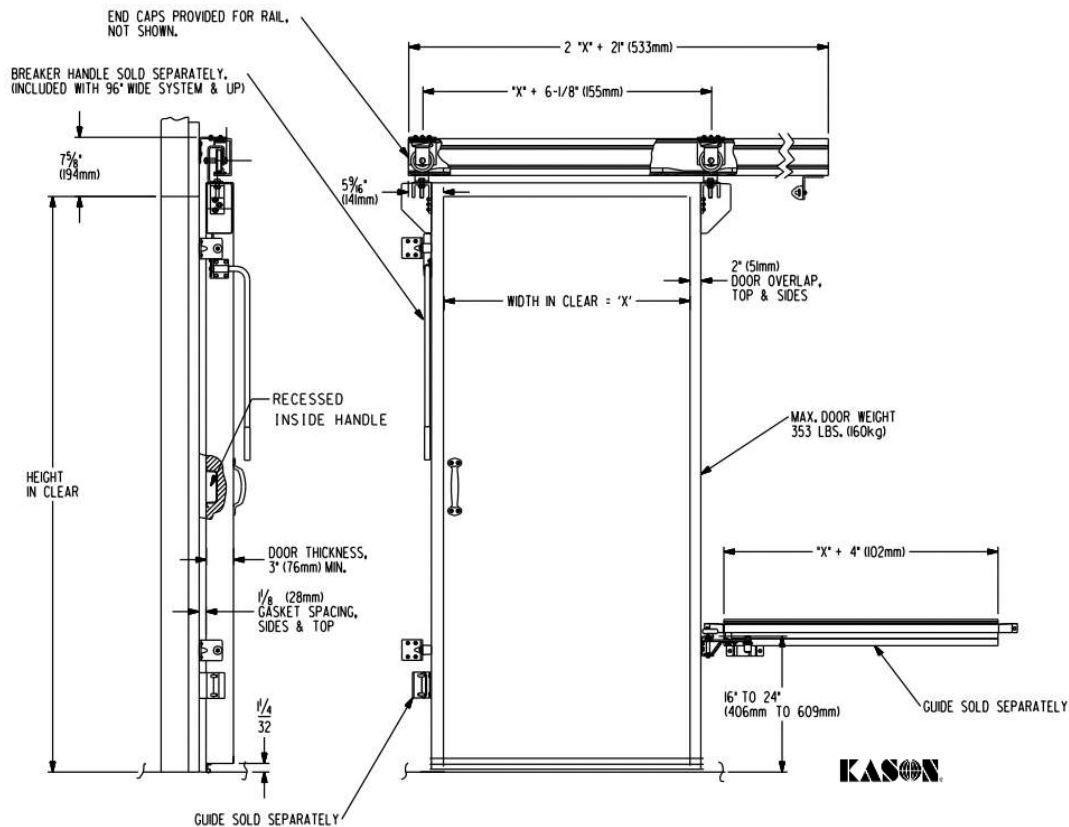
- Factory pre-assembled and tested
- **KASON** 8100 Series Hardware
- Floor Guide standard
- Multiple metal finish options
- Indoor & Outdoor applications



### Optional Features

- Wall Guide
- Breaker Handle
- Kick Plate
- Door Window
- Padlock Kit with safety release

## 8100 Series Premium Doorware



## 8100 Styliner Systems

- **KASON** sliding door systems install with your doors for freezer, cooler, cold storage, and warehouse applications
- Attractive, corrosion-resistant aluminum outer rail and track with stable carrier guides, ensure efficient door operation
- Integrated, enclosed track systems will not derail
- Engineered for extra strength to handle door loads up to 353 lb. (160kg), as much as twice the weight of most comparably priced systems. Mechanisms are tested to a minimum of 250,000 cycles

### 8100 End View With Covers



## 8100 Styliner Basic Track System Ordering Guide

- All System parts, plus Styliner edge-mounting hanger assemblies (2)
- Styliner rail end caps (2)
- Styliner hanger assembly covers (2)

### 8100 End View Without Covers

